

SERVICE BULLETIN:

KINGPIN BEARING AREA CALCULATION

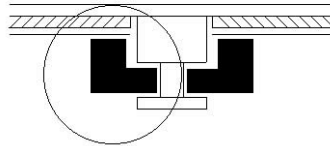
Calculation for Sufficient Kingpin Bearing Area to Accommodate Polyglide Plate

Although the Polyglide plate will not affect the bearing area on most kingpin/trailer bolster plate combinations, the following circumstance may affect the bearing area and will not allow the Polyglide plate to be utilized.

- Trailer bolster plate layover instead of replacement.
- Heavier Gauge trailer bolster plate used without the use of a longer kingpin.

Follow the supplied measuring procedures to be sure your trailer fleet has the sufficient bearing area to utilize the Polyglide plate.

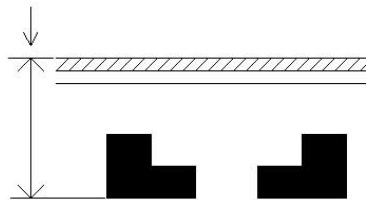
5th WHEEL JAW AND KINGPIN ENGAGEMENT WITH POLYGLIDE PLATE



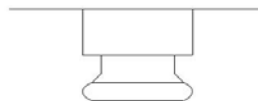
CORRECT ENGAGEMENT WITH THE CLEARANCE BETWEEN LOWER 5TH WHEEL JAW SURFACE & LOWER KINGPIN SHOULDER

MEASUREMENTS ASSURING SUFFICIENT BEARING AREA

MEASURE FROM TOP OF THE POLYGLIDE TO LOWER SURFACE OF 5TH WHEEL JAW.
PLEASE NOTE: THE FIFTH WHEEL POLYGLIDE MEASURES .25" TO .30"



MEASURE FROM TRAILER BOLSTER PLATE TO TOP SHOULDER OF KING PING



The measurement from the Polyglide plate to the lower 5th wheel jaw surface must be less than the measurements from the trailer bolster plate to top shoulder of the kingpin. This will assure that the 5th wheel jaws are not riding on the lower shoulder of the kingpin and the trailer coupling will not be affected.